

BEYOND SWIPES

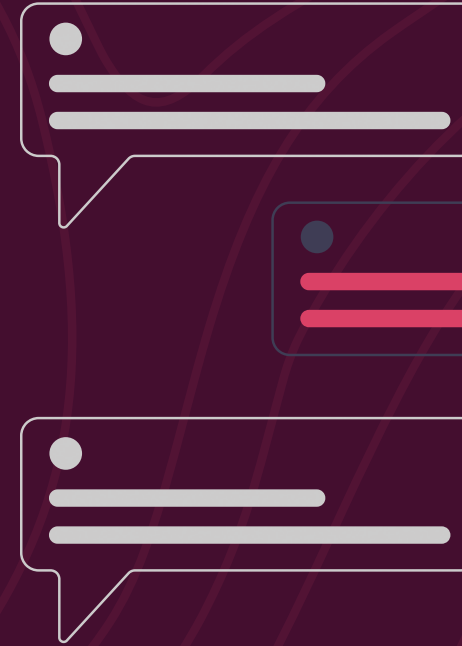
The Future of AI-Powered Human Connection

BEYOND SWIPES

The Problem



Traditional dating apps:
shallow, addictive, and
emotionally draining



Swiping fatigue,
ghosting, unsafe
environments



Lack of
emotional
depth and
genuine
compatibility
matching



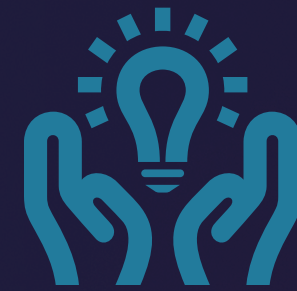
Fragmented discovery for friends,
gamers, professionals

Our Innovative Solution



Consent-Based Progression

Clear milestones ensuring mutual comfort



AI Relationship Therapist

Guidance, conflict resolution, emotional intelligence



AI-Driven Matchmaking

Psychographic & personality-based, no swiping



Simulation Layer

Pre-screen interactions with AI-driven avatars



Verified Users Only

Secure and scam-free environment



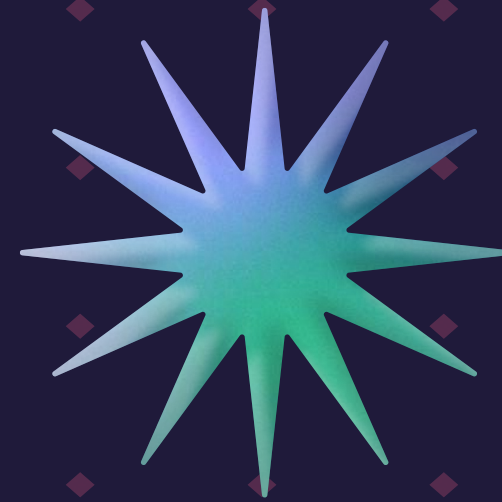
Multi-mode Platform

Romantic, Friendship, Gaming, Professional

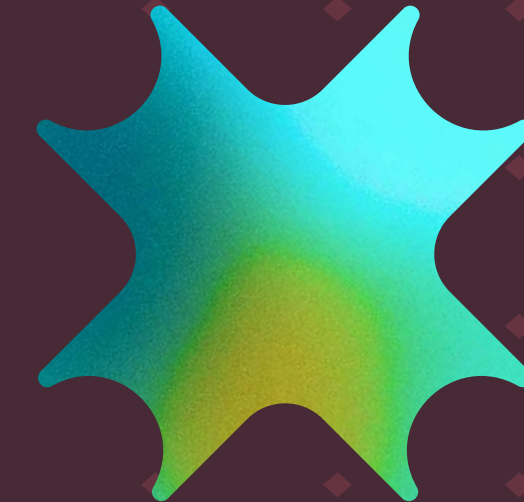
PRODUCT OVERVIEW



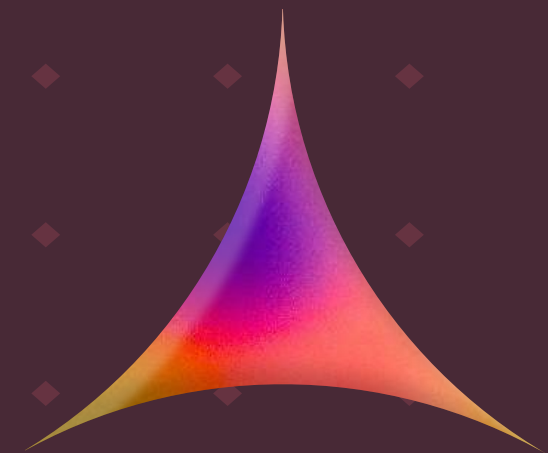
Conversational AI Onboarding:
Natural, engaging profile
creation



Deep Psychographic Profiling:
OCEAN model, attachment
styles, love languages



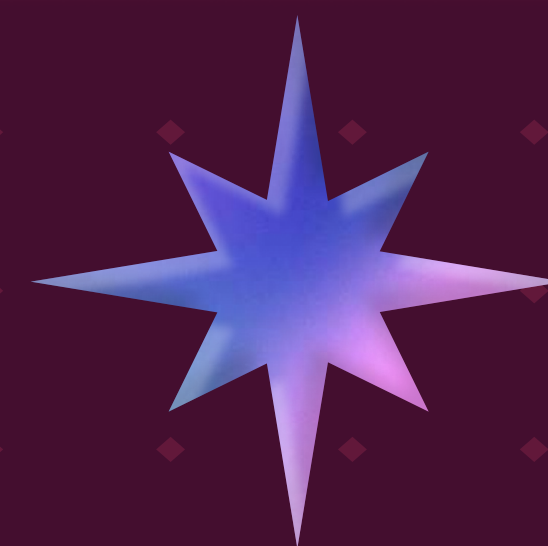
Interactive Simulations: AI-
generated avatar interactions
pre-real contact



Consent Milestones: Digital
consent record (first date to
engagement)



AI Relationship Therapy:
Journaling, insights, conflict
resolution



People Mode: Dedicated
experience for friends, gamers,
professionals

UNIQUE SELLING PROPOSITIONS (USPS)





ZERO SWIPING

Quality, personality-driven connections

CONSENT FOCUSED DESIGN

Safety, comfort, progressive relationship building



3

AI PRE- SCREENING

Reduces emotional and time investment on
incompatible matches



INTEGRATED AI THERAPIST

Personalized relationship insights and coaching

BEYOND SWIPES





GAMIFIED USER EXPERIENCE

XP rewards for engagement and personalized
journey

MULTIPURPOSE DISCOVERY

Beyond romance into friendships, gaming, and
professional networks

BEYOND SWIPES





MARKET OPPORTUNITY

GLOBAL DATING APPS MARKET

\$12B+

(GROWING ANNUALLY)

FRIENDSHIP APPS

(E.G., BUMBLE BFF, GENEVA)

GROWING AT
15%
CAGR

GAMING & SOCIAL DISCOVERY

\$12.7B+

\$25B+ BY 2029

**RELATIONSHIP
WELLNESS
AND AI
THERAPY**

\$4.5B+

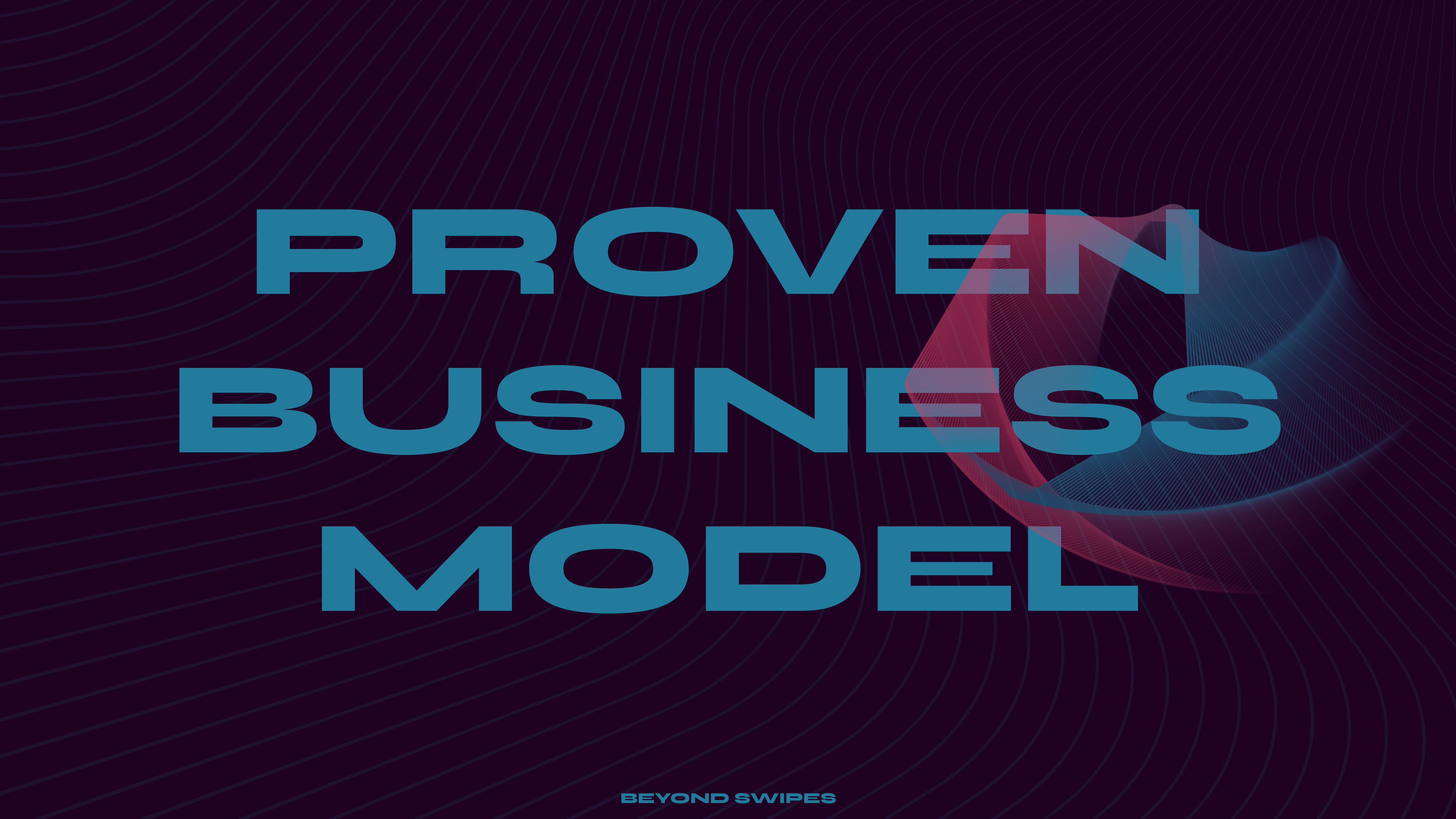
INDUSTRY

BEYOND SWIPES



Positioned uniquely at the **intersection** of these lucrative markets

PROVEN BUSINESS MODEL

The background features a dark blue field with a pattern of fine, concentric, wavy lines. A prominent, thick, red, curved swoosh or ribbon-like shape sweeps across the right side of the image, partially overlapping the text.

BEYOND SWIPES

Freemium

Monetization
through value-
add premium
services

AI Therapist Insights

Premium relationship analysis

Professional Mode

Revenue from matchmaking fees and
transactions

In-App
Purchases

XP boosts, avatar
enhancements

Paid Simulations & Match
Upgrades

Advanced compatibility checks

NFT Relationship Milestones

Digital collectibles for memorable
moments

Privacy
Features

Enhanced
security
subscription

COMPETITIVE ADVANTAGE

Platform	AI Driven	Consent Based	Simulations	Modes Offered
Hinge	✗	✗	✗	Romantic Only
Bumble	✗	✗	✗	Romantic, Friendship
BEYOND SWIPES	✓	✓	✓	Romantic, Friends, Professional

Business Model & Financial Projections

PHASE	REGISTERED USERS	PREMIUM CONVERSION	ESTIMATED MRR	ESTIMATED ARR
PRE-SEED By Feb 2026	100,000	5%	~\$35,000	~\$420,000
SEED By Dec 2026	1M	7%	~\$490,000	~\$5.9M
SERIES A By Jan 2027+	3M	10%	~\$2.1M	~\$25.2M

Establish the foundation of Beyond Swipes through team formation, foundational engineering, early traction, and MVP delivery.

Pre-Seed Phase

MAY 2025 – FEB 2026

Transform Beyond Swipes into a new form of social media—customized, emotionally intelligent, privacy-first, and XR-ready.

Series A

JAN 2027

ROADMAP

MAR 2026 – DEC 2026

Seed Phase

Expand Beyond Swipes into a multi-mode platform, scale the team and infrastructure, and introduce monetization.

Vision Post-Series A

Beyond Swipes evolves into the core infrastructure for meaningful digital connection—integrating human compatibility, AI precision, and emotional intelligence to enhance psychological, emotional, and relational wellbeing.

Experienced & Agile Team



Founder & CEO

Shreshth Verma

🌟 Senior Engineer (AI, Blockchain, Crypto)

🌟 Ex- **UmmLabs** **IDS** Udiconn Associates

🌟 Daylell Scholar, University of Sydney
(Advanced Computing + Finance)



CORE TEAM

2 Developers (University of Sydney)

1 Marketer (University of Sydney)

+ Lean, technically proficient, and experienced in delivering sophisticated digital products.

Current Traction



UX Fully Prototyped



**Proof of Concept (Matchmaking, AI onboarding)
built**



Active Website & Waitlist



**Early Community
Development underway**

INVESTMENT OPPORTUNITY

Pre Seed Funding Goals:
\$700K AUD for 10% Equity

Use of Funds:

Complete MVP

Expand Team (AI, UX, Full Stack)

Server & Marketing Costs

Emergency Buffer

Timeline:

MAY 2025 – FEB 2026

Why Invest Now?

- ✱ Swipe culture **burnout** increasing dramatically
- ✱ Gen-Z prioritizing emotional **intelligence**, **consent**, and **digital privacy**
- ✱ AI maturity enables **realistic** simulations and deeper connections
- ✱ First-mover advantage in defining the **future** of **digital human connections**

Let's Build the Future of Connection.

More than an app—a new social infrastructure

A chance to lead in transforming human interactions through depth, safety, and meaningful connections

Join us in building a more **connected**,
understanding world.



BEYOND SWIPES